

The Summit

ANNUAL REPORT 2021-2022

BREAKING NEW GROUND



Elli Ward - MFS Client and 2022 High School Graduate
Read her story inside - "Breaking the Stigma for
Young People"



*A year of growth
and transformation*



Board of Directors 2021-2022

CHAIR

Brian Donovan
Keene

VICE CHAIR

Alfred John Santos
Keene

TREASURER

John Round
Keene

SECRETARY

Aaron Moody
Keene

ASST. SECRETARY

Sharman Howe
Marlborough

Laurie Appel
Harrisville

Reba Clough
Keene

Glenn Galloway
Keene

Julie Green
Keene

John Hoffman
Sullivan

Christine Houston
Keene

Bill Nickey
Burlington

Andrew Parsley
Jaffrey

Jan Peterson
Spofford

Judy Rogers
Keene

Joe Schapiro
Keene

Honorary Lifetime Members

Susan Doyle

Audrey Hadcock

John E. Hoffman, Jr.

Diana MacVeagh

Dear Friends:

It would be difficult to imagine a year as momentous in the history of Monadnock Family Services as the last twelve months have been. As the organization continues into the early decades of our second century, it is undeniable that we're starting a new chapter in our history.



Phil Wyzik
Chief Executive Officer



Brian Donovan
Chair of the Board of Directors

Consider that our delivery of mental healthcare services has, like many other organizations, weathered an unprecedented public health crisis with the impact of the COVID-19 pandemic. Through it all, we can assert that our clients and staff took prudent steps to stay healthy. We have embraced the use of telehealth services to maintain our support efforts and treatments, keeping our dedication and drive for our mission always at the forefront.

The last year has also been the culmination of a strategic goal first adopted by our Board of Directors in 2017, namely, the search for a new Keene location for our services that can position us for growth and the future. With our acquisition of 40 Avon St this past June – the result of over two years of dreaming, planning, and collaborating with a broad group of talented community members – MFS stands poised to start a wonderful new phase of our service to the region.

This is not without its challenges too. It's clear that every employer faces daunting issues when it comes to staffing. As we accelerate our effective recruitment and retention practices, we understand that 'business as usual' is a strategy of bygone times. We'll need new ideas, programs, and services to fit the needs of our changing times as the expectations of clients and their families raise the standards of effectiveness.

The future will require us to be creative, enthusiastic, and nimble. Fortunately, those qualities are deep in the marrow of our bones. The talented staff and volunteer Board members are ready for this task. We can reach into our legacy of care that has served so well for over a century, to our broad and supportive community whose financial contributions have made our capital campaign so successful, and to our unwavering commitment to doing the work we all love. **To every donor, stakeholder, and supporter of our mission, our deepest gratitude goes out to you because, without your help, our impact is smaller and untreated illness causes undue suffering.**

We hope you find our current report informative and inspiring. Thank you for your interest in our accomplishments and, more importantly, the accomplishments of our clients. It is our honor to serve the region as its community mental healthcare resource and we plan on doing so well into an exciting future.

Sincerely,

"I didn't know why I was having overwhelming anxiety and persistent panic attacks, but I knew I needed help,"

eighteen-year-old Elli Ward shared.

ELLI'S STORY:

Breaking the Stigma for Young People

Brave enough to go to her parents to request therapy, Elli found Clinician Liz Biron, MS, LCMHC, working in our Peterborough office. *"Talking to Liz, I realized that those symptoms were a result of living in chaotic and stressful circumstances that surrounded me every day. This insight gave me a reason and the clarity I needed to understand my mental health challenges. It changed everything for me."*

At 16, Elli first came to Monadnock Family Services looking for answers. She was having severe panic attacks on a regular basis. She had headaches and stomach pain all the time. She experienced test anxiety so bad that it was affecting her grades. But Elli didn't understand why all of this was happening.

Elli isn't alone. According to the CDC, in 2021, more than a third of high school students reported they experienced poor mental health during the COVID-19 pandemic, and 44% reported they persistently felt sad or hopeless during the year.

Once she trusted Liz and began to open up, Elli could see that her symptoms were an understandable reaction to the complex relationships in her life and the traumas she experienced. *"I gained self-respect and knew that my challenges were not my fault."*

In therapy, Ellie learned that anxiety has many roots, such as childhood experiences, traumatic events, chemical imbalances in the brain, or any combination of those and other causes.



"For the first time, I knew that someone was in my corner. I knew I could tell Liz anything and she wouldn't think badly of me." That unconditional acceptance from her therapist helped Elli turn things around.

Elli is off to college, having graduated fourth in her class! She no longer has those terrible panic attacks and is excited about her future.

"Now I can leave the inconsistency that has surrounded me my whole life behind. I often hear Liz's supportive voice in my mind, like a parent that is always there for me. Her guidance and compassion help me stand up for myself."

Liz could not be prouder of the work that Elli has done. *"She has been able to rise above her difficult circumstances and learn about herself. And at such a young age!"*

Elli wants to share her journey to help other young people find their person, find their "Liz". She wants to inspire others to seek help.

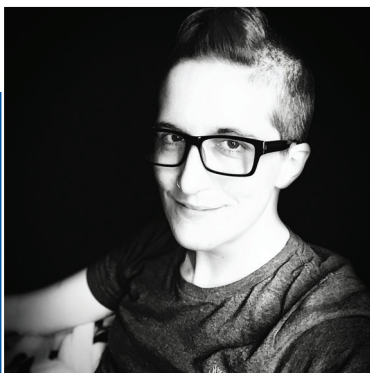
With mental health challenges in young people on the rise, Elli's story is so important to share. She understands that talking about it helps to break down the stigma.

So, what is Elli going to study in college? She wants to major in Counseling.

Washington Wellness

Though the majority of services at MFS are out-patient, our residential services provide care and skill building services to help client's graduate to independent living. In the first weeks of our newest residential program, Washington Wellness, clients have been sharing a repeated theme: **It feels like home.** *"This is the greatest testament to our program being how we envisioned it."* Ray Lagasse, Residential Services Manager shared. Community Support Program Director Jess Howard further explained, *"Washington Wellness is a project to help clients with mental illness develop independent living skills. We help them learn budgeting, tenancy, and interpersonal skills while being independent in a shared living space. We want them to feel at home in this environment and develop positive peer relationships. The clients also have additional services from MFS, including case management, therapy, medication services, supportive employment, and Inshape depending on their needs and goals."*

Clients in the program sign a one-year lease, but they have the option to leave earlier if they feel ready and have secured stable, independent housing. *"Once the clients have graduated from the program, they will have a positive rental history and a landlord reference to help them find independent living,"* Howard added. *"We are hopeful that with our services and support, they can be successful in the future living on their own. **So many people who live with mental illness struggle to find and keep stable housing. We hope to change that for each of our residents and offer them hope for their future.**"*



"I work at MFS because I believe we can make a lasting, positive difference in the lives of our clients and by extension, make a positive difference in our community. The best part of my job is the amazing, supportive team that I am privileged to work with and learn from each day."

—Liz Haynes, Adult Services Case Manager

The new six-bedroom program, housed in a renovated area within Monadnock Peer Support (MPS) will offer clients frequent peer interaction and group options. Speaking about the benefit of a partnership with MPS, MFS CEO Phil Wyzik shared, *"MFS and MPS have a long history of collaboration. The support people receive from both organizations are each made better with this teamwork."* Since clients moved in at the beginning of June, the program has seen great success. *"Residents are courteous, respectful, and focused on working together as a unified group. I've seen residents being generous to share food, inviting people to watch a movie, and do outdoor activities."* Lagasse shared. ***"Additionally, I've never witnessed a group of individuals more compelled to support and help their fellow roommate as they do at Washington Wellness. It is a truly heartwarming experience to witness."***

"I'm thankful to be part of an agency that is committed and supportive of our residents, staff, and program." Lagasse concluded. *"Without the support from the agency, we wouldn't have a program that is flourishing."*



Where They Need Us

Sometimes health emergencies surface at all hours of the day or night. The same is true for mental health care. For decades, the clinical staff at Monadnock Family Services has provided urgent assessments and interventions for people experiencing a mental health crisis every day, around the clock.

On January 1, 2022, we launched an improvement in our work: a mobile crisis team. As part of the statewide New Hampshire Rapid Response Access Point, this new program gives people who are experiencing a mental health emergency the ability to call a 24/7 state-wide number (833-710-6477) and talk with a counselor who can assess their current situation and provide resources and de-escalation techniques to address the problem. If needed, they can dispatch our mobile crisis staff to their exact location for intervention. *"The immediate goal of the program is to stabilize people who are in crisis."* Phil Wyzik, CEO shared. *"Then we can provide follow-up with a counselor as soon as the next day."*



Mobile Crisis Team

The hope is that this program will prevent many people who are in crisis from having to go to the emergency room, which can result in long wait times and delayed access to being seen by a mental health professional.

The new program also responds to schools, hospitals, police stations or other settings when needed. ***"The strength in this program is our new ability to meet people where they are"*** Keven Stevenson, Director of Acute Care Services added. ***"It allows us to provide community-based care, in the moments when it is needed most."***

One of the biggest obstacles in preparing to open this program is the shortage of crisis counselors. Since the start of 2022, we added five staff to this team but that's not keeping up with what we need.

To further strengthen the response to our community, we in the process of partnering with Diluzio Ambulance Service to join us on our response in the community. This teamwork will add a vital new dimension to our effort. It makes for both a mental health professional and emergency medical technician to collaborate in a whole-person assessment.

Across the country, we are seeing investments in making sure that people who are experiencing a mental health crisis have access to immediate help. We are proud to be doing our part in the Monadnock region to ensure that our community members have access to professional and compassionate emergency care.

Spotlight Moments



Food for Families Who Cook

On April 2nd, over 100 people donated non-perishable food and diapers to the food drive, helping families and individuals across our service area. The food was sorted, and our staff were able to shop for clients who face food insecurity. Even after our staff collected food for our clients, we were able to donate 40 boxes of food to The Community Kitchen to help more community members in need. The feedback from MFS staff detailed the profound impact these donations have had, from a diabetic client receiving pantry staples that meet his nutritional needs to a single mother who was moved to tears by her delivery of diapers.

Preview and Panel Discussion of Hiding in Plain Sight: Youth Mental Illness

On June 12th, we co-hosted the first public preview of the Ken Burns documentary, Hiding in Plain Sight: Youth Mental Illness with New Hampshire PBS! After the preview, MFS CEO Phil Wyzik led a panel discussion with Film participant Yanerry, Writer David Blistein, Producer Julie Coffman, Co-Director and Editor Erik Ewers, and MFS COO Katherine Cook (pictured above). Over 75 community members joined us for the film which presents an unvarnished window into daily life with mental health challenges, from seemingly insurmountable obstacles to stories of hope and resilience.





Staff Appreciation Month

This year, our staff appreciation was a whole month long! We took the entire month of November to recognize and appreciate our hard-working staff. Our Incorporators played a huge role in the success of this project through their donations of a coffee fund at Prime Roast, a serenade at the MACC, yummy treats delivered all across our office locations, and many donated raffle prizes. Additionally, thanks to funds from our Alice Circle members, our supervisors had the opportunity to recognize their staff directly. They got creative, with small group activities like ax throwing and cuddles with Barry the guinea pig, as well as tokens of appreciation like soft blankets and coffee cards.



Book Signings

MFS CEO Phil Wyzik hosted two book signings for his debut novel "Pushed Down, Then Out" at the Keene and Peterborough Toadstool Bookshop locations. The novel is a call for compassion, telling a story about the powerful social stigma faced by those with mental health challenges. Profits from the novel benefit a new initiative with the Health Monadnock Alliance called the Monadnock Alliance on Trauma and Transformation which aims to make the Monadnock region a trauma-informed community. Visit our mfs.org to learn more about the novel and assembly.

Art Walk:

"I do therapeutic art for myself and all the ugly I feel inside battling PTSD, anxiety, depression, dissociation, and panic attacks. When I bury myself in my therapeutic art, feeling ugly, I paint beautiful animals without a word. My doctor and case manager never give up on me. They guide me in the right direction and inspire me to keep doing what I love. I could not have done it without their encouragement and guidance. I wanted to share this with everyone. MFS has impacted my life and helped my world be a safer, a more stable place for me."

-Mary Cotton, MFS Client and Art Walk Participant



Monadnock Family Services has enjoyed having clients, staff, and friends showcase their talents and creativity in the first-floor window of our 64 Main St. location since taking over the space a few years ago. This year, seven clients and staff, and former Board Member Sue Doyle participated. The cherished community event has become an opportunity to share how art is an integrated part of their routines and experiences with mental and emotional wellness. Some of the artists in this year's Art Walk also submitted artist statements, which provide reflection and insight into what their pieces and the creative process mean to them.



Opportunity and Hope: The Campaign for MFS



CEO Phil Wyzik inside 40 Avon St. pre-renovation

Grateful and proud: that is how we would describe our reaction to the way our community has supported us in the last year. In late June, MFS purchased the building at 40 Avon Street in Keene to consolidate MFS Keene programs and services to address the problem of multiple facilities that are cramped, unwelcoming, and inefficient. To finance this, Monadnock Family Services launched a 1.25 million dollar capital campaign, *Opportunity and Hope: The Campaign for MFS*, in the summer of 2021. The response was astounding, with the total funds raised now exceeding \$1.8 million, including grants!

In late July, we hosted a ground breaking ceremony with key leaders and supporters. Many staff have now had the opportunity to visit the building, which has amplified excitement for the impact of the new space. *"All of the staff who have toured the new building with me reiterate the same theme: This space will provide hope and healing for our clients"*, CEO Phil Wyzik shared.

The project will create a high-quality, welcoming mental health care center with much-needed room to grow, enhanced special services such as art and dance therapy, and more cost-effective operations for years to come.

It allows us to ensure that we continue to be the community mental health center of the Monadnock region for generations to come. We are excited to be entering the renovation phase of our timeline. The plan is to start relocating our Keene community-based services into the new facility by next spring. Watch for upcoming news on an open house and celebration with our community.

**Thank you to everyone who invested in our next chapter!
You have made a difference in mental health care for our community.**





Transition from the Hospital to the Community– with Help from a Coach

“The client was so nervous about finding housing as he left the psychiatric hospital,” states Transitional Coach Raonak Shristy (pictured above). “Knowing he had me in his corner gave him much-needed comfort. We solved his complex housing needs together.”

Critical Time Intervention (CTI), a new, free program provided by Monadnock Family Services (MFS), works with people as they are discharged from a psychiatric inpatient facility. As clients make this transition, their CTI Coaches work with them over nine months to connect with community supports and form lasting relationships, so they can stay in their homes and avoid another hospitalization.

“Before people even leave the hospital, we meet with them. This assures them that they will not be alone and will get all the resources and support they need”, Raonak shared. “We listen to what their goals are for themselves and how we can help.”

Once discharged, CTI Coaches meet with their clients wherever they feel most comfortable. From securing safe housing to transportation to medical and legal needs, their Coach is there for them to assemble the resources that are crucial to their recovery. The program’s end goal is for people to be at ease managing their community supports independently.

This MFS transitional program, made available through the NH Department of Health and Human Services with no requirement that clients have insurance, is an important part of the equation to keep healthy people in their own homes.

The Batchelder Society

In September 1905 on her property at 91 Court Street in Keene, Mrs. Alice Batchelder gathered some friends and acquaintances for a meeting that would grow to inspire her community for the next century. This meeting sparked what became known as the Associated Charities of Keene, now known as Monadnock Family Services.

The intentions of the original 28 concerned citizens live on today in the generosity of our donors. It was with this caring legacy in mind that we created The Batchelder Society, providing friends and supporters with the opportunity to create their own legacy to benefit MFS.

We are deeply grateful for the generosity of those who have included MFS in their estate plans, choosing to make a lasting difference in the lives of others.



John C. Calhoun +
Susan R. Chollet
Carolyn Crane & Eileen Fernandes
Mary Delisle
Susan Doyle
Ruth Ewing +
JoAnn and Bill Fenton
D. Baldwin Gardner +
Mary Hewitt +
Jean Hoffman
Ken + and Carol Jue
Agnes Lindsey +
Helen Livingston +

Douglas Maynard +
Karen Adams-McGhann +
Isabelle F. Miller +
Dorothy D. Peterson +
William M. Scranton +
Lucy Shonk
James and Catherine Talbert
Peter and Suzanne Whitte-
more
Mildred B. Wolfe +
Story and Thomas Wright +
Philip Wyzik
1 Anonymous Friend

+ Indicates Deceased

For information about how you can name Monadnock Family Services in your estate plans, please contact Kathy Waters, Director of Development at (603) 209-5947 or kwaters@mfs.org.



We are fortunate to live in a community with a wealth of helping organizations and caring people. We count Monadnock Family Services as among the most critical of that network. As members of the Batchelder Legacy Society we are committed to supporting the work of MFS today and into the future.

- Carolyn Crane and Eileen Fernandes

We couldn't do it without you!

Thank you to our caring and generous donors.

All gifts listed on the following pages were received during our 2022 fiscal year, between July 1, 2021 and June 30, 2022.

These lists have been prepared with care. If your name has been listed incorrectly or omitted in error, please accept our sincere apology and notify Kathy Waters, Director of Development at (603) 209-5947 or kwaters@amfs.org so that we may update our records.

Founders \$10,000+

2 Anonymous Donors
 Nathan Alexander
 Laurie Appel **
 Jill Batty and Daryl Stutes **
 Mrs. Susan R. Chollet ***
 Mrs. Ann S. Clarkeson ***
 Rick and Jan Cohen **
 Sue Doyle ***
 Robert and Alfrieda Englund ***
 Thomas Ewing & Marilyn London-Ewing
 Caroline and Tom Ewing ***
 Bill and JoAnn Fenton ***
 George and Lisa Foote ***
 Carl and Karin Gravina
 Peter and Bridget Hansel *
 Nancy and Roger Hansen ***
 Thomas and Anne Havill ***
 Paul and Susan Henkel **
 John and Jean Hoffman ***
 Sharman Howe and Eduardo Moura *
 Carl and Ruth Jacobs
 Ken+ and Carol Jue***
 Jay and Cheryl Kahn **
 Jane and Steve Larmon **
 Diana and Charlton MacVeagh ***
 Greg and Sue McConahey **
 Nina and Archie McIntyre
 Thomas and Lisa Migneault
 Dorothy Peterson ***+
 Jim and Judy Putnam ***
 Bob and Mary Rooney ***
 John Round **
 Eileen and Michael Sarson *
 Ms. Lucy C. Shonk ***
 Isobel Sportello +
 Ms. Jeanie Sy ***
 Nancy and Paul Vincent ***
 Sarah S. Webb ***
 Philip F. Wyzik **
 Louise R. Zerba ***

Leaders \$5,000-\$9,999

1 Anonymous Donor
 Don and Jill Brehm ***
 Larry and Suzanne Butcher **
 Mike and Kathy Chelstowski ***
 Karen Clement and Richard Jordan *
 Brian P. Donovan *
 Gay and Hugh Eaton ***
 Bernard J. Hampsey, Jr. *
 Joyce and Don Healy *
 Christine Houston
 Molly and Kendall Lane *
 Craig and Sylvia McBeth ***
 Sandie Phipps ***
 Judy and John Rogers
 Jeff and Linda Rubin ***
 Gary and Jane Shapiro ***
 Mr. Fran Silvestri & Ms. Susan Hallwright
 Kimball and Maria Temple *
 Julie and Gregg Tewksbury ***
 Anthony and Barbara Tremblay
 Thomas and Beverly Westheimer ***

Builders \$1,500-\$4,999

2 Anonymous Donors
 Joseph and Stephanie Baute ***
 Dave and Kim Bergeron **
 Jack Calhoun and Elizabeth Healy***
 Scott and Christine Clarke
 Reba Clough
 Mary Delisle and George Foskett ***
 Ted and Heather McGreer
 Allen and Ellen Mendelson **
 Janice and Roger Peterson
 Gigi Pratt
 Judith Putzel *
 Bill and Martha Raymond ***
 Jack and Arria Sands ***
 John and Valerie Santos **
 Connie and John Schlegelmilch **
 Sally Shonk **

Lynn and Arthur Simington
 Winston and Sherry Sims ***
 Cindy and Tom Stewart *
 Sharon and Nat Stout ***
 Cameron Tease and Dixie Gurian ***
 Robert and Lianne Therrien *
 David and Lisa Therrien **
 Maich Gardner and Ed Tomey ***
 Kathy Waters
 Peter and Suzanne Whittemore ***
 Jack and Aylene Wozmak

Sustainers \$500-\$1,499

2 Anonymous Donors
 Bill and Kathy Baldasaro *
 Jim and Anne Banghart **
 Cecily Bastedo ***
 Thomas J. Bergin Jr. *
 J. Yancey Brame
 Edward Burke & Kathleen Kennedy Burke*
 Dennis and Tiffany Calcutt *
 Mike and Betty Christiansen ***
 Hilda deMoya
 Bill and Kristine Dow *
 Richard Fecowicz
 Carolyn Crane & Eileen Fernandes **
 Mark and Alona Florenz
 Cheri and Stan Fry***
 Glenn and Abigail Galloway *
 Sarah Biller and Dean Gekas *
 Laura Gingras and Dave Fish **
 Douglas and Julie Green
 Mark and Kathy Gross **
 Rob and Sherry Guardiano *
 George Scott and Charlotte Guyer **
 Joan and Preston Haskell *
 Ann K. Heffernon *
 Gilbert W. Hunter
 Judy and Richard Kalich *
 Bruce and Jane Keough ***
 Megan Burke Kidder ***
 Mr. and Mrs. Thomas Lacey **
 Henry and Mary Lee **

* 5-9 Years of Giving

** 10-14 Years of Giving

*** 15 or more Years of Giving

+ Indicates deceased

Marion Lefrancois **
 Bob and Linda Lester *
 Mr. and Mrs. John Lewis **
 Madeline Ling
 Susan and David Lord ***
 Jan McGonagle
 Dennis Mead **
 Barbara Michelson and James Heffron
 Anne and Bill Moyle ***
 Susan and Jeffrey Newcomer ***
 William Nickey
 Judy and Bob Perry
 Jane and Les Pitts **
 Chris and Gaynelle Pratt
 James Robinson
 Butch and Eva Roeder
 Jim and Marianne Rothnie *
 Jim and Sharon Rousmaniere
 Steve and Lucy Ryder *
 Joe Schapiro and Nicki Demarest
 Richard Scheinblum **
 Craig Stockwell and Sarah Mustin **
 Mrs. Eve M. Stone ***
 Bob and Katie Sutherland
 Dr. and Mrs. Carl Szot
 Jim and Cathie Talbert ***
 Jane F. Taylor
 Gary and Susan Tochtermann ***
 Sue Warren
 Kathy and Bill Weibel ***
 Ms. Julie A. White

Stewards \$250-\$499

3 Anonymous Donors
 Phillip Bastedo ***
 Cheryl Belair and Steve Bragdon
 Sheila Blair
 Andrew Bower
 Rushton and Charles Callaghan *
 Sophie Carney-Brenner & Daniel Carney
 Sally Stoddard Collier *
 Deb Coltey
 Jim and Sarah Despres
 Irene and Steve Farrar
 Susan S. Farrell *
 Cecile Goff *
 Steve and Lou-Annebe Gyory
 Allen and Roz Humes ***
 Risa and Doug Keene
 Suzy and Paul Krautmann **
 Liz LaRose
 Mr. and Mrs. Joseph P. Manning ***
 Mary Ellen Moore ***
 Michael and Gloria Morison *
 Martha Reed and John L. Murphy *

Tom Murray and Linda Cates
 Ann+ and James Robinson **
 Mike and Kendra Shea *
 Nicholas and Regina Silitch *
 David and Jane Stabler ***
 Barbara Taft
 Anne D. Twitchell **
 Donna and Rick Webb **

Supporters \$100-\$249

4 Anonymous Donors
 Charles and C Elizabeth Anderson
 Rita V. Armideo
 Rev. Cynthia Bagley
 David and Fay Barden
 Julie Barrett
 Ken and Lynn Bergman
 Paul and Alyse Bettinger *
 Jean Bleyle *
 Debbie Bowie
 Barbara A. Bryce Psy.D.
 Patrick and Maria Carroll
 Sarah and Jeff Clough **
 Mr. & Mrs. Maurice Collins
 Francis de Marneffe ***
 Mary Delaney
 Roland and June Despres ***
 Elizabeth DiPrima
 Mr. and Mrs. Richard B. Dugger
 Jay Eason
 Peter Espieffs **
 Rudy Fedrizzi
 Lynette and Jon Frederick
 Ann Gagnon
 Mary Gannon, Paul and Ella Bogdonoff *
 Deborah Gaudreau
 Zaven and Linda Giragosian **
 Gina Goff
 Graham Goldin
 Yvonne Goldsberry and Cherie Holmes **
 Michael and Jennifer Gomarolo
 Willard Goodwin ***
 Robert and Mary Gray **
 Mr. and Mrs. Cyrus Gregg ***
 Mr. Dan Griffin
 Mr. and Mrs. William Gurney *
 Audrey Hadcock ***
 Dick and Marian Hamilton *
 Kevin Hampsey
 Mr. and Mrs. Hanson ***
 Ellie and Paul Hardy
 Mr. and Mrs. John Harper ***
 Mr. and Mrs. Joseph S. Hart ***
 Carol K. Henderson
 Leslie Holland

Dr. Owen R. Houghton **
 Peter and Teresa Imhoff ***
 Alex Kapiloff
 Steve Kim
 Joslin Kimball Frank
 Karen Knowlton
 Barbara and Paul Koutras *
 Drew Paul & Carol Garcia Landry **
 William and Barbara Lindsey *
 Mary Lindstrom
 Brooke Lloyd
 John and Gail MacLean
 Deborah and Edward Madigan
 Ms. Melissa Maurer
 Elizabeth McCann
 Stephen P. McGreal *
 Mr. & Mrs. Frank Mieso
 Christopher Mills M.D.
 Mr. and Mrs. Phillip Miner
 Charles & Mary Louise Montgomery
 Jeannelle Moore
 Dawn Moser and John Woods
 Tim and Pam Murphy
 Mr. James Newcombe
 Richard and Angela Nicoletti *
 Dr. Judith Olson & Mr. Anthony Olson
 Walter and Donna Opdenbrouw
 David Orgaz *
 Ronald Ouellette
 Rhonda Patnode
 Larry and Paula Phillips
 Jean H. Prior **
 Rosemary Rafter
 Peter and Suzanne Read **
 Christine Robidoux
 Amy Whitney and Gary Robinson
 Shannon Rudisill
 Martin and Corianne Sarsfield
 Daniel V. Scully **
 John and Lisa Seleen
 Christine and Timothy Selmer **
 Peter Shapiro and Kelly Herrity
 Chuck and Ellie Shaw **
 In Honor of the Dedicated Staff at MFS **
 Sharon Smith *
 Jinsook Song and Steve Kim
 Chris and Margot Sprague *
 Ms. Marla Steffle
 Rev. and Mrs. Stinson
 Michael and Patricia Stoudt **
 Tom Swenson and Jane Ann Howey
 Judge and Mrs. Richard Talbot
 Jon and Kathy Thatcher
 Denise Thomas ***
 Sarah Tibbetts

* 5-9 Years of Giving

** 10-14 Years of Giving

*** 15 or more Years of Giving

+ Indicates deceased

Marc and Sharon Tieger ***
 Lucy Truslow
 Hillary Twining
 Pamela Vanderloo
 Jon Wakelyn and Joyce Walker
 In Memory of Todd Walier
 Lloyd and Lorraine Walker
 Douglas K. Watson
 Linda Whalley
 Samantha and Stefan Wilhelm **
 Jeanne Williams
 Fletcher and Hollis Wilson *
 Joe and Lorraine Youngs ***
 Martha and Susan Zimmerman

Friends up to \$99

5 Anonymous Donors
 Katherine Baird
 Mimi Barber *
 Mr. and Mrs. Barry
 Kristen Barwood
 Rosaly Bass
 E.A Bazler
 Donna Bentkowski
 Virginia Bergeron
 Mr. and Mrs. Alan H. Boyer *
 Kelly Brigham Steiner
 Sally Bulger *
 Don Burness+
 Donna and Joe Calabro **
 Ann Chamberlain *
 Jason and Alexis Clark
 Mary Clark
 Bob and Tere Clarkson
 Elizabeth Cleary-Clark & Brian Clark
 Claire Coey
 Tonya Cornell

Mr. and Mrs. Wayne Crowell *
 Carol M. Davis
 Mr. Glenn Davis & Ms. Marylouise Alther
 Alicia Deaver
 Mrs. Laurette G. Descoteaux ***
 Julie Dickson and Jay Smeltz
 Margaret Dineen
 Julia Dutton
 Mr. and Mrs. Richard B. Dugger
 Shaun M. Filiault
 Donald and Paula Flemming
 Joseph and Janice Fournier
 Christina Furlone
 Mr. and Mrs. Frank R. Giorgio **
 Mary Carol Grip
 Ginnette Groome
 Paula Gulo
 Grateful Day Homestead **
 Thomas and Kathleen Hamon
 The RT. Rev. and Mrs. Hart **
 Lisa Hawkins
 Gloria Hayes
 Judy Henderson
 Jessica Howard
 Joel and Anne Huberman
 The Jansen Family
 Ann Jillson
 Evelyn L. John *
 Sandra and Robert Jones
 Claudine Kay
 Jean Kilham
 Kendra Kilian
 Jim Lambiasi
 Paul and Lois Loder
 Stephen and Mary Lodge
 John And Melanie Lovering
 Theresa Marabito

Ms. Heather McKernan
 H. Michael and Diane Metell
 Mr. and Mrs. Moller
 Kristie Mowinski
 Margaret E. Nelson
 Susan and Charles North *
 Judith Palmer
 Sharmon Perham
 Susan Peterson **
 Martha Pinello
 Anne Quesada
 Sally Rinehart and Bert Boyce *
 Trish and Bill Ritter
 Donna Robbins
 Nicole Sauber
 Katie Schwerin *
 Brian and Laurie Shaughnessy
 Julie Dickson and Jay Smeltz ***
 Marcia Smith
 Ms. Ellen Smith
 Mitch Snide
 Kay Springfield
 Mary Gail St. Laurent
 Lonni Stapanon
 Candace and Vinnie Suarez
 Karen Tomasetti
 Jane Vincent
 Dana Wasserbauer
 Suzanne Waters
 Dr. and Mrs. Leonard Weldon
 Mr. Frank Werbinski & Ms. Sydney Stern
 Mark and Linda West
 Julie Wolf
 Stefanie Worcester
 Martha Wright
 Nicole and Erdi Zorbaci

* 5-9 Years of Giving

** 10-14 Years of Giving

*** 15 or more Years of Giving

+ Indicates deceased



“The MFS Eastern Regional Office (ERO) in Peterborough allows people to have supports closer to home, which encourages engagement and allows for easier access to support services. It’s important for people to know that we are an established agency that provides quality care to the people we serve. Our employees are passionate about their work and take pride in what they do. We at ERO, as well as the agency as a whole, are consistently working towards providing the programming needed to serve the needs of the people in our communities. Healthy individuals make for healthy communities.”

-Scott Folsom MSW, LICSW - Eastern Region Office Coordinator

Gifts-in-Kind

Apollo Steel LLC
Katherine Baird
David and Fay Barden
Jill Batty and Daryl Stutes
Lou-Anne Beauregard
Alyssa Bender
Mr. and Mrs. David J. Bergeron
Debbie Bowie
Edward Burke & Kathleen Kennedy Burke
C&S Wholesale Grocers
Dennis and Tiffany Calcutt
Charcoal Charlie Pini
Mike and Kathy Chelstowski
Mr. and Mrs. Robert Clarkson
Dick and Sandy Creamer
Carol M. Davis
Mary Delisle and George Foscett
Patricia Dixie
Mr. Brian P. Donovan
Mrs. Susan Doyle
Susan S. Farrell
Rudy Fedrizzi
Carolyn Crane and Eileen Fernandes
Glenn and Abigail Galloway
John and Kristina Germano
Mitchell and Erika Greenwald
Charlotte Guyer
Nancy Hann

The RT. Rev. and Mrs. Hart
Lisa Hix
Molly Hoekman
Nancy Hood and Tom Jamison
Cynthia Johnson
Keene Elm City Rotary Club
Ms. Megan Burke Kidder
Jacqueline Kooper
Robert Kostick
Dr. and Mrs. Steven S. Larmon
Donna Leather
Joyce Leclere
Ms. Marion Lefrancois
Bob and Linda Lester
Mr. and Mrs. Greg M. McConahey
Payal Mistry
Montshire Museum of Science
Michael Moore
Peter Morrison
Kate Neary
Nelson Congregational Church Food Pantry
Northeast Mountain Footwear
Terri O'Rorke
Rhonda Patnode
Janice and Roger Peterson
Larry and Paula Phillips
Pizza Pie
Mr. and Mrs. Prior

Allison Riley and Paul Hoffman
Donna S. Robbins
Butch and Eva Roeder
Judy and John Rogers
Eileen Sarson
Savings Bank of Walpole-Keene
Mr. Paul Scheuring
Arthur and Lynn Simington
Mitch Snide
Mr. and Mrs. Larry Sportello
St James Church
Sharon and Nat Stout
Barbara Summers
David and Mary Ellen Swett
Jeanie M. Sy
Ms. Jane F. Taylor
Cameron Tease and Dixie Gurian
Dave and Lisa Therrien
Adrian Wood and Mary Tighe
Karen Tomasetti
Ed Tomey and Maich Gardner
W.S. Badger Company, Inc.
Donna and Richard Webb
Ms. Sarah Webb
Mr. and Mrs. Stefan Wilhelm
Sheila H. Williams
Yvette Yeager and Tom Bassarear
Mrs. Louise Zerba



"As a Psychiatric Nurse here at MFS, no day is the same, and the variation and novelty are what motivates me. I truly am passionate about helping our diverse clients. Having passion gives me purpose in life. Having a purpose leads to fulfillment and happiness!"

—Kristin, ACT LPN

Corporate and Foundation Giving

368Art	Keene Rotary Interact Club	Taylor & Francis Group, LLC
Amazon Smile	Kiwanis Club of Keene	TD Charitable Foundation
Apollo Steel LLC	Ladies Charitable Society	The Benevity Community Impact Fund
Arthur Getz Charitable Trust	Liberty Mutual Group, Inc.	The Blackburn Giving Fund
C&S Wholesale Grocers	Look Up LLC	The First Church in Jaffrey, Congregational-UCC
Cambridge Trust	Mascoma Bank	The Gilbert Verney Foundation
Charcoal Charlie Pini	Milestone Financial Planning, LLC	The GoodCoin Foundation
Cheshire Medical Center	Monadnock United Way	The Insurance Source, Inc.
Chesterfield Lions Club	Montshire Museum of Science	The Keene Sentinel
Clear Solutions, Inc.	NAMI New Hampshire	The Kingsbury Fund
Cogswell Benevolent Trust	Natick High Class of 63	The Mason and Bertha Rev. Trust
Despres & Associates	NBT Bank	The Woods, LLC
Dobisky Associates	Nelson Congregational Church	Timken Company Charitable and Education Fund
Dublin Community Church, UCC	Food Pantry	Town Fair Tire Foundation
Dust to Shine, LLC	Network For Good	Union Congregational Church
Electronic Imaging Materials	New Hampshire Charitable Foundation	Women's Fellowship
Emmanuel Church	Northeast Mountain Footwear	United Church of Christ - Women's Fellowship
Fifth Generation Inc.	Oleonda Jameson trust	United Way of MA Bay, Inc.
Filtrine Manufacturing Company	Papagallos Restaurant	United Way of Massachusetts Bay and Merrimack Valley
Friendly Gift Shop	Pizza Pie	W.S. Badger Company, Inc.
Greenwald Realty Associates	Plethuno Foundation	Wilder Plumbing & Heating, Inc.
Grove Street Fiduciary, LLC	Roy A. Hunt Foundation	Yankee Publishing Incorporated
Hannaford - Keene	SAU 29 - United Way Designations	
Harrisville Public Library	Savings Bank of Walpole	
Johnson & Johnson	St James Church	
Keene Elm City Rotary Club	Target Corporation	
Keene Lions Club		

In Honor of...

In Honor of Suzette Borden

Nathan Alexander

In Honor of Mary A. Delisle

Nathan Alexander

In Honor of Robert Englund

Jon Wakelyn and Joyce Walker

In Honor of Audrey Hadcock

Thomas Stewart & Cindy Rodenhauser Stewart
Bob and Mary Rooney
Cindy and Tom Stewart

In Honor of John and Jean Hoffman

Laura Gingras and David Fish
Chris and Gaynelle Pratt
Chris and Timothy Selmer
Dobisky Associates
Mr. and Mrs. Prior
Rick and Jan Cohen

In Honor of Kenneth Jue

Jason and Alexis Clark
Jane and Gary Shapiro
Paul and Susan Henkel
Nathan Alexander

In Honor of Owen R. Houghton

Lynette and Jon Frederick

In Honor of Melissa Maurer

Barbara Michelson & James Heffron

In Honor of MFS Staff

Mr. Peter Skalaban

In Honor of Robert Rooney, Sr.

Steven and Jane Larmon

In Honor of Kara Serasis

Karen Knowlton

In Honor of Annelies Spykman

Kate Neary

In Honor of Skye Twining

Hillary Twining

In Honor of Philip F. Wyzik

Chris and Timothy Selmer
Laura Gingras and Dave Fish

In Memory of...

In Memory of Bob Allen

Virginia Bergeron
Douglas K. Watson
Dan Griffin
Edward Burke & Kathleen Kennedy Burke
Jeannelle Moore
Despres & Associates
Mark and Linda West
Friendly Gift Shop

In Memory of Linda Bastedo

Mr. Phillip R. Bastedo

In Memory of David Bingham

Donna Bentkowski
Kay Springfield
Marcia Smith

In Memory of John A. Bleyle

Jean Bleyle

In Memory of Mort Brenner

Sophie Carney-Brenner & Daniel Carney

In Memory of Tom Casey

Sandie Phipps

In Memory of Rick Chollet

Susan Chollet

In Memory of Timothy R. Clark

Mary Clark

In Memory of Thomas A. Daly

Ann K. Heffernon

In Memory of Joseph M. Descoteaux

Mrs. Laurette G. Descoteaux

In Memory of Sharon Eason

Jay Eason

In Memory of Ruth D. Ewing

Joslin Kimball Frank
The Keene Sentinel
Tom and Caroline Ewing
Thomas Ewing & Marilyn London-Ewing

In Memory of Artie Feinhart

Kathy and Bill Weibel

In Memory of Michael Florez

Patrick and Maria Carroll
Mr. & Mrs. Maurice Collins
Claudine Kay
Jim Lambiase
Candace and Vinnie Suarez
Nicole and Erdi Zorbaci
Ken and Carol Jue

In Memory of Donald Fuller

Julie Barrett
John and Melanie Lovering

In Memory of Tom Goldfuss

Joan Jansen

In Memory of Alex Gordon

Kathy Waters

In Memory of Stella Green

Douglas and Julie Green

In Memory of Daniel Hale

William and Margaret Gurney
Robert and Alfrieda Englund
Dan Griffin

In Memory of Jean Hampsey

Bernie Hampsey

In Memory of Norma Houghton

Dr. Owen R. Houghton

In Memory of Richard Jansen

Joan Jansen

In Memory of Kenneth Jue

Anonymous
NAMI New Hampshire
Natick High Class of 63
Electronic Imaging Materials
Savings Bank of Walpole
Mr. and Mrs. John Barry
Ms. Cheryl Belair
Mr. and Mrs. Alan H. Boyer
Kelly Brigham Steiner
Dennis and Tiffany Calcutt
Mr. Glenn Davis & Ms. Marylouise Alther
Julia Dutton
Ann Gagnon
Robert and Mary Gray
Ginnette Groome
Paula Gulo
Charlotte Guyer
Rev. and Mrs Robert C. Hamm
Judith Henderson
Judy and Richard Kalich
Dr. and Mrs. Douglas Keene
Molly and Kendall Lane
Liz LaRose
Madeline Ling
Brooke Lloyd
John and Gail MacLean
Mr. and Mrs. Charlton MacVeagh
Elizabeth McCann
Mr. and Mrs. Allen Mendelson
H. Michael and Diane Metell
Jeff and Susan Newcomer
Ronald Ouellette
Judith Palmer
Judy and Bob Perry
Larry and Paula Phillips
Dr. and Mrs. Leslie Pitts
Trish and Bill Ritter
Shannon Rudisill
Nicole Sauber
Peter Shapiro and Kelly Herrity
Arthur and Lynn Simington
Ms. Ellen Smith
Dave and Jane Stabler
KCraig Stockwell and Sarah Mustin
Sharon and Nat Stout
Bob and Katie Sutherland
Tom Swenson and Jane Ann Howey
Jeanie M. Sy
Judge and Mrs. Richard Talbot
Denise C Thomas
Gary and Susan Tochtermann
Anthony and Barbara Tremblay

Nancy and Paul Vincent
Kathy Waters
Donna and Richard Webb
Mr. Frank Werbinski & Ms. Sydney Stern
Mr. and Mrs. Thomas Westheimer
Jeanne Williams
Dr. Judith Olson & Mr. Anthony Olson
Bob and Mary Rooney
Sandra and Robert Jones

In Memory of Brian Kirby

Evelyn L. John

In Memory of Jean Lane

John and Paula McQuillan

In Memory of Bret Clay Leighton

Donna S. Robbins

In Memory of Arthur J. Lienhardt

Kathy and Bill Weibel

In Memory of Mary F. Manning

Mr. and Mrs. Joseph P. Manning

In Memory of Kayla Ramsey-Marsh

Dr. Marianne Marsh

In Memory of Theresa Ayotte Migneault

Thomas and Lisa Migneault

In Memory of Robert Wayne Miller

Reba Clough

In Memory of Dorothy Peterson

Cambridge Trust
The Mason and Bertha Rev. Trust
Mary Delisle and George Foskett
Leslie Holland
Mary Lindstrom
Mr. and Mrs. Moller
John and Jean Hoffman
Kathy Waters
Ms. Lucy C. Shonk

In Memory of Ann Robinson

Molly and Kendall Lane

In Memory of Christopher E. Round

John A. Round

In Memory of Merton E. Round

John A. Round

In Memory of George Scott

Charlotte Guyer

In Memory of Isobel Sportello

Mary Delisle and George Foskett

In Memory of Debby Twining

Hillary Twining

In Memory of Todd Walier

Joseph and Judith Walier

In Memory of Jean B. Wenigmann

Sarah and Jeff Clough

In Memory of Mildred Wolfe

Carol K. Henderson

In Memory of Nicholas Wurschmidt

Alicia Deaver

At The Heart of Our Organization

The dedication and devotion of these caring friends is immeasurable – thank you all!

Current MFS Incorporators, Committee Members, and Event Volunteers

Frank Abbate
Laura K. Appel
Cynthia Bagley
Christine S. Ballou
Phillip R. Bastedo
Jill L. Batty
Ann Bazan
Kevin Bazan
Cheryl Belair
Dee Belanger
Tamara Benaquist
David J. Bergeron
Lucia Bergeron
Joannie Berriman
Jane Blanchard
Tina S. Boylan
Patrick Brown
Sarah McKelvey Bulger
Kathleen Kennedy Burke
Cynthia S. Caddell
Dennis Calcutt
Jack Calhoun
Michael Chelstowski
Kathy Chelstowski
Susan R. Chollet
Elizabeth Cleary-Clark
Karen Clement
Reba Clough
Jeff Clough
Evelyn J. Clowes
Kirsten O. Colantino
Ann W. Conway
Raymond Cote
Carolyn Crane
Diane Croteau
Mary K. Delaney
Mary Delisle
Julie Dickson
Brian P. Donovan
Dean Dorman
Susan Doyle
Judy Dubriske
Thomas Eaton
Alfrieda Englund

Robert Englund
Susan S. Farrell
Donovan Fenton
Jackie Fenton
JoAnn Fenton
Bill Fenton
Maryanne Ferguson
Shaun M. Filiault
Alona Florenz
Lisa Foote
George Foskett
Yves Gakunde
Christopher Gallagher
Glenn Galloway
Mary Gannon
Donna Garner
Laura Gingras
Kay Godsoe
Gina S. Goff
John Goodhue
Willard Goodwin
Mary Gray
Julie Dickson
Douglas Green
Julie Green
Cy Gregg
Kathleen R. Gross
Bernard J. Hampsey
John H. Hann
John P. Hansel
Elizabeth Hansel
George S. Hansel
Nancy Hansen
Roger Hansen
Robert Hanson
Bill Hattendorf
Elizabeth C. Healy
Ann Heffernon
Jean Hoffman
John Hoffman
Owen R. Houghton
Christine Houston
Sharman H. Howe
Allen Humes

Sam Jacobs
Alex Kapiloff
Jane S. Keough
Megan Burke Kidder
Jean M. Kilham
Sarah J. Kingsbury
Drew P. Landry
Molly B. Lane
Kendall W. Lane
Jeremy LaPlante
Jane G. Larmon
Marion Lefrancois
Arto Leino
Bob Lester
Linda Lester
Diana MacVeagh
Mark Madden
Tyler Madden
Roberta Mastrogiovanni
Greg M. McConahey
Jan McGonagle
Stephen P. McGreal
Curtis Mead
Allen Mendelson
Aaron Moody
Mary Ellen Moore
Tom Moses
William Nickey
Maria Oberlander
David G. Orgaz
Raleigh Ormerod
Andy Parsley
Anne G. Peirce
Janice Peterson
Susan Peterson
Sandie Phipps
Tim Pipp
Judith Putzel
Martha Raymond
Margaret Rice
Timothy R. Robertson
Eva Roeder
Robert Rooney
Mary Rooney

John A. Round
Linda A. Rubin
Judy Sadoski
Arria Sands
Alfred Santos
Eileen Sarson
Joseph Schapiro
Heather Scheck
Lucy C. Shonk
Sally Shonk
Susan Shonk
Winston Sims
John E. Smeltz
John E. Smeltz
Julie Dickson
Kathy Sportello
Larry Sportello
Christopher Sprague
Michael Stoudt
Sharon Stout
Nat Stout
Barbara Summers
Katie C. Sutherland
Jeanie M. Sy
Jane F. Taylor
Cameron Tease
Gregg R. Tewksbury
David Therrien
Denise C. Thomas
Sarah Tibbetts
Ed Tibbetts
Conner Tollett
Ed Tomey
Robin Topper
Penelope R. Vaine
Nancy Vincent
Thomas O. Westheimer
Daniel White
Peter T. Whittemore
Samantha Wilhelm
Rosemary Wolpe
Elsa Worth
Louise Zerba

Financials

(Does not include capital campaign funds)

Program Service Fees

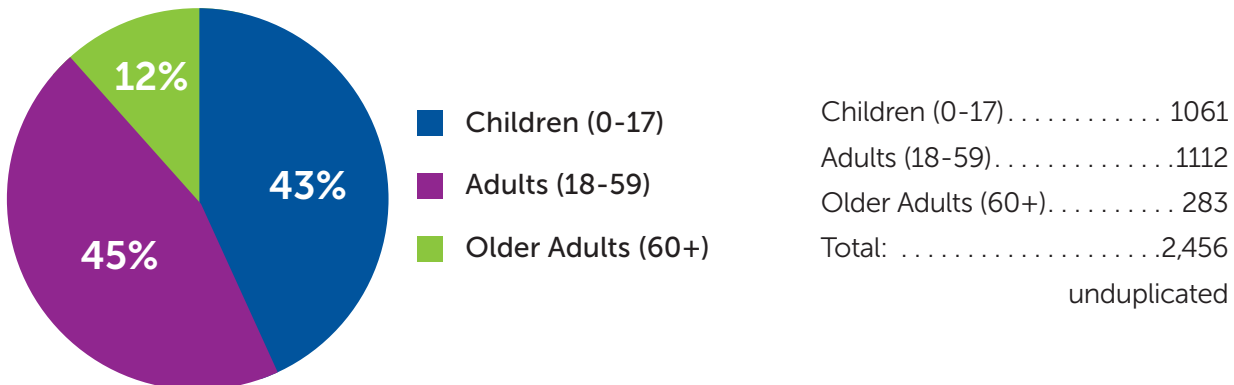
Client Fees	205,465
Private Health Insurance	555,235
Medicaid	11,153,668
Medicare	254,114
Public Support	1,174,305
Federal Grants	342,105
State Funding	360,988
Program Fees	51,266
Other Income	174,298
Total Revenue	\$14,271,444

Expenditures

Personnel	10,525,205
Professional and Consultant Fees	396,898
Staff Development & Training	47,729
Occupancy	934,222
Consumables	256,286
Equipment / Communications	276,752
Transportation	86,460
Client Services	179,035
Transfer to Affiliate	896,532
Other Expenses	481,115
Total Expenditures	\$14,080,234

Serving all Ages:

MFS services touched the lives of 2,456 friends and neighbors throughout Cheshire County and beyond in FY 2022.



Services Provided to Friends and Neighbors

Town	Town Contributions	Clients	Hours of Care
Acworth	\$1,000.00	1	31
Alstead	\$2,330.00	36	442
Antrim	\$3,313.00	37	677
Bennington	\$1,876.00	20	235
Charlestown	\$0.00	3	27
Chesterfield	\$4,440.00	43	723
Dublin	\$1,915.00	21	193
Fitzwilliam	\$2,995.00	44	552
Francestown	\$2,012.00	13	260
Gilsum	\$940.00	11	172
Greenfield	\$500.00	26	476
Greenville	\$2,467.00	43	896
Hancock	\$2,163.00	23	330
Harrisville	\$1,230.00	11	139
Hinsdale	\$5,058.00	119	2,083
Jaffrey	\$6,650.00	100	2,362
Keene	\$30,000.00	882	21,552
Langdon	\$0.00	5	28
Lyndeboro	\$800.00	6	178
Marlborough	\$2,620.00	81	1,621
Marlow	\$936.00	13	2,904
Nelson	\$786.00	10	123
New Ipswich	\$250.00	40	1,917
Peterborough	\$8,022.00	109	2,267
Richmond	\$1,496.00	16	166
Rindge	\$6,100.00	54	1,031
Roxbury	\$275.00	4	25
Sharon	\$0.00	1	1
Stoddard	\$1,717.00	22	285
Sullivan	\$822.00	16	103
Surry	\$1,025.00	17	286
Swanzey	\$7,500.00	210	4,162
Temple	\$1,727.00	12	241
Troy	\$2,681.00	63	972
Walpole	\$2,000.00	97	2,202
Westmoreland	\$2,000.00	21	224
Wilton	\$4,870.00	44	342
Winchester	\$5,426.00	182	3,613
TOTALS	\$119,942.00	2456	53,837



*Thank you for making this a
groundbreaking year!*



**MONADNOCK
FAMILY
SERVICES**

Mission Statement

Our Mission is to be a source of health and hope for people and the communities in which they live, particularly as it pertains to mental illness. We create services that heal, education that transforms, and advocacy that brings a just society for everyone.

MFS Office Locations

Keene

64 Main Street, Suite 201
Keene, NH 03431
(603) 357-4400

17 93rd Street
Keene, NH 03431
(603) 357-4400

24 Railroad Street
Keene, NH
(603) 357-4400

www.mfs.org

[f](#) [@](#) [in](#)

Winchester

83 Parker Street
Winchester, NH 03470
(603) 239-4376

Peterborough

9 Vose Farm Road, Suite 120
Peterborough, NH 03458
(603) 924-7236

**Jaffrey- Monadnock Adult
Care Center**

22 North Street
Jaffrey, NH 03452
(603) 532-2427